



**Olympus Rally Safety Plan  
April 17 - 19, 2026  
Shelton, Washington**



**OlympusRally.com**

1)

## Introduction

In a special stage rally, a crew, consisting of driver and co-driver, follow a route that consists of some number of special stages, where the elapsed time for the crew to traverse the stage is recorded. These are connected by transit sections, service stops, and control areas. The Rally is sanctioned by American Rally Association (ARA), insured by United States Auto Club (USAC), and conducted in accordance with the ARA's General Competition Rules (GCR), Rally Competition Rules (RCR), Rally Technical Rules (RTR), and Rally Supplementary Regulations (Supps). Approximately 95 teams will compete in this event, supported by approximately 300 volunteers.

Painted Pony Promotions, LLC (AKA Olympus Rally Committee), and American Rally Association, are wholly responsible for the content and implementation of this plan.

*Net Control Location:*

Port of Shelton Inactive Runway (PSIR)  
249 West Sanderson Way  
Shelton, WA  
503-435-8369 (Beth's Personal Cell #)

Primary Repeater: 147.120 (+.600), pl 173.8 "Green"  
Secondary Repeater: 145.250 (-.600), pl 146.2 "Red"  
Tertiary Simplex: 147.500

*Rally Headquarters Location:*

Port of Shelton Inactive Runway (PSIR)  
249 West Sanderson Way  
Shelton, WA

*Stages and transits will be within:*

Mason County, WA  
Grays Harbor County, WA

*Stage roads owned by:*

Green Diamond Resource Company

2)

## Officials

*Chairman* - Overall supervisor of the event. Manages the organizing committee and serves as the primary contact person for the event. Functions as the Public Information Officer (PIO) in case of an incident.

*Clerk of the Course* - Manages the course, selects special stages, develops the competition schedule, produces event maps, and manages event operations

*Chief of Controls* - Manages volunteers and their required equipment.

*Chief of Emergency Services* – Drafts the safety plan, manages all rally resources during an active emergency. Works with Net Control to contact and coordinate with local non-rally resources. Manages, recruits, approves, and trains sweep volunteers and medically trained volunteers.

*Chief of Communications* - Manages radio communications including Net Control. Assigns frequencies, secures repeater access, recruits, trains, assigns, and supports Licensed Amateur Radio Operators (HAMs).

*Stage Captains* - Responsible for the operation of their assigned stage(s). Manages the volunteers assigned to their team, prepares the stage for competition, places marshals, banner tape, arrows, signs, timing equipment, etc.

*Marshals* - Control access to the stage road, operate timing equipment at starts and finishes.

*Chief of Service* - Organizes the service area, and assigns teams areas. Manages MTC, regroup, and re-fueling area.

*Chief Scrutineer* - Manages inspections of competition vehicles pre-event and during event operations, including tech zones and post event impound.

*Registrar* - Maintains a list of competitors, crews, and their emergency contact and medical information.

*Safety Delegate* - Designated by ARA to promote safety and consistency between rallies in layout, designation and marking of the course. Conducts a final review of danger signage locations, spectator area design, set-up and containment, as well as clear escape zones at blocker locations. In addition, the Safety Delegate will review the set-up of start and finish control incursion protection.

*Steward* - Represents the sanctioning body during the rally, ensuring the event is run safely, the competition is fair, and the rules are followed.

3)

## **Safety Teams**

3.1)

### **Course Opening Team**

Course Opening Team vehicles will drive each stage road to ensure it is ready for competition. Each should be staffed by a driver and co-driver, expert in all aspects of rally, high speed driving, course and control zone marking, and timing. Car numbers "0" through "000" or "Safety Delegate" will be displayed on the sides. Specific roles are outlined in Section 6 below.

3.2)

### **Sweep - "E-Crew"**

3.2.1)

#### **Start Sweep**

One or two Sweep trucks will be at the start of each active stage, 1 hour before First Car Out time. The Sweep trucks shall be positioned as near as practical to Stage Start, with an unobstructed path to the stage road, and a clear sight line to Start Control. Numbers "S88" through "S99", and "e-crew" will be displayed on the sides. Each will be staffed by a driver who is a licensed ham radio operator and with either a medically trained volunteer "Medic" or a non-medic navigator. In case of a serious incident, the stage will be stopped by the stage captain with consultation with officials via Net Control, and sweep and the ambulance will be dispatched.

3.2.2)

#### **Heavy Sweep**

This event does not designate a Heavy Sweep.

3.2.3)

#### **Safety Sweep**

A sweep truck will be designated to follow the entire route directly after the last competitor through the entire route, including transits, and passing through all control points. In addition to the requirements of 3.2.4, Safety Sweep will be staffed by a driver highly experienced in sweep operations, and an experienced co-driver. The truck will be equipped with a RallySafe transceiver.

### **3.2.4) Qualifications for Sweep**

The Chief of Emergency Services and Sweep Captain will evaluate personnel qualifications on a case-by-case basis. The Sweep volunteers will use 4WD/AWD trucks, capable of safely completing the stages maintained in excellent mechanical condition, and will be expert using the following equipment:

#### **Recovery Equipment**

- recovery strap
- tow straps
- winch (optional)
- air compressor
- HAM radio
- chain saw
- battery sawzall
- fire extinguishers
- pry bar
- spill kit
- tool kit
- spares for vehicle
- shovel
- jumper cables
- tire plug kit

### **3.2.5) Qualifications for Medics**

All medical personnel, "Medics", volunteering for the Rally should be trained and experienced as any of the following:

- Paramedic
- Emergency Medical Technician (basic, intermediate, or advanced)
- PA, RN, LPN, or MD.

The Chief of Emergency Services and EMT Coordinator will evaluate these and other qualifications on a case-by-case basis.

#### **Medical Equipment**

- Backboard (long or short / KED)
- Cervical collars
- Compresses and bandages
- Stethoscope
- Blood pressure cuff
- CPR Mask or Bag Valve Mask
- Oral airways
- Oxygen and delivery devices
- Splints
- Flashlight
- Hot packs
- Sterile water
- Band-Aids
- Non-latex gloves

### **3.3) Standby Ambulance**

An ALS ambulance will be placed on standby during the event. It will be staffed by at least one EMT or Paramedic, and licensed to operate in the jurisdiction(s) where the rally is held.

#### **3.3.1) Location**

The ambulance will be centrally located, within approximately 10 minute response time to the start, or finish, of the active stages. If stationed at a spectator location, spectator marshals will ensure the access road remains unobstructed, so that the ambulance may leave at any time without traversing the stage road.

#### **3.3.2) Communication**

Primary communication with the ambulance will be by Ham Radio on Net Control frequency. The ambulance will respond at the request of the Chief of EMS or Net Control, based on the initial evaluations performed at the scene of any medical emergency.

#### **3.3.3) Availability**

If the ambulance responds to a medical emergency, The rally will be delayed until it is back in service, or replaced.

### **4) Chain of Command**

In the event of an emergency, especially involving injury, danger to the Land-Owners property (such as fire), danger to the public, the Chief of Emergency Services will have authority to direct all rally resources as needed.

#### **4.1) Normal Operations**

Clerk of the Course  
Chief of Controls  
Chief of Emergency Services  
Chief of Communications - Stage Captains - Stewards

#### **4.2) Emergency Operations**

Chief of Emergency Services  
Clerk of the Course  
Chief of Controls  
Chief of Communications - Stage Captains – Stewards

## **5) General Safety Procedures**

The GPS coordinates and addresses of starts, finishes, mid-stage access points, landing zones, etc. will be available. It will be distributed to Net Control, local emergency service agencies, and Sweep.

### **5.1) Notice to Local Authorities**

The Fire Chief of each Fire District where a Special Stage or Service will be located will be contacted. An introduction to Rally in general and our safety program specifically will be provided. Available resources such as ALS/BLS units, brush rigs, extrication services, landing zones, etc. will be evaluated. They will be provided with a copy of the schedule, a map showing the roads used for Special Stages, a copy of the HAM plan, a copy of this safety plan, and a telephone number for Net Control during the event.

In addition, notice will be given by email to local law enforcement, and road departments. Personal contact will be made with any private residences affected by the rally to secure their cooperation/permission as needed. The competition portion of the event takes place entirely on private land.

### **5.2) Communication (Radio)**

Organizers, volunteers, Course Opening Teams, and Sweep Teams will communicate primarily using HAM radios on VHF/UHF frequencies. A detailed frequency plan will be published by the Chief of Communications. Each stage will use a dedicated frequency for communications relating to that stage. Net Control will operate a separate dedicated frequency used for communicating general rally information, and for emergencies.

Net Control is a central location where experienced volunteers will use radios, cell phones, and computers to facilitate communication between organizers, Stage Captains, Course Opening Teams, and Sweep Teams. During an emergency, Net Control will request assistance from local resources by calling 911.

Before a stage is declared hot, the following locations will have confirmed radio contact with Net Control:

- Stage Start, "Start Hams"
- Stage Finish, "Finish Hams"
- Critical junction points and radio relays, "Mid-Point Hams"
- Spectator Locations, "Spectator Hams"

The following positions will have access to the communications network:

- |                               |                       |
|-------------------------------|-----------------------|
| • Chief of Communications     | • Chairman            |
| • Chief of Emergency Services | • Clerk of the Course |
| • Course Opening Team         | • Service Captain     |
| • Safety Delegate             | • Chief of Controls   |
| • ARA Competition Director    | • Steward             |
| • Sweep Team (E-Crew)         |                       |

### **5.3) Competitors**

Chief Scrutineer will ensure that each competitor and rally car complies with the safety requirements of ARA's RCR and RTR. At the start of each stage, Start Control Marshals and/or Sweep Teams will ensure that competitors' safety harnesses, head-and-neck restraints, and helmets are properly fastened, and that fire suppression systems are armed.

#### **5.3.1) Refueling**

Refueling area(s) will be designated and operated in accordance with ARA's RCR. Competitors will provide and man a fire extinguisher during their re-fueling operations.

### **5.4) Volunteers**

Stage volunteers are briefed in rally procedures by their assigned stage captain, including personal safety while operating start or finish controls, and controlling stage access points.

Volunteers rendezvous with their assigned Stage Captain and are escorted to their assigned position and are accounted for at the close of each stage.

### **5.5) Media**

Media personnel will be accredited by ARA and will comply with the ARA Media Policy. Each must wear a numbered vest whenever they are near a stage road, and when they are in a vehicle transiting a stage road. Unrestricted media (blue vests) are permitted to work from any location that adheres to ARA policy on safety, while restricted media (red vests) are only allowed in specified locations listed in the event media information.

Course Opening, Marshals, Sweep, and other Rally Officials have authority to require media personnel to move if they are in an un-safe location. Unsafe behavior by media personnel may result in revocation of their credentials.

### **5.6) Environment**

Rally cars and Sweep Team trucks will carry spill kits meeting the requirements of ARA RTR. Competitors and volunteers will work to prevent spills of fuel, oil, coolant, etc. If a spill is discovered, contaminated materials will be removed and bagged for disposal. The Landowner will be notified if a large spill occurs, or if a stream or pond is affected.

## 5.7) Spectators

Official viewing of the rally is limited to designated Spectator Areas. These viewing areas are under the direction of the Chief of Spectator. Marshals will manage spectator activity in the proximity of racing. Spectator areas and Marshal locations will be reviewed by 000 and 00, any questionable conditions will be reported to Net Control and noted for final review by Safety Delegate. If Marshals and Chief of Spectator or the Chief Emergency Services determine that spectators are not safe, emergency procedures for Stage Intrusion may be implemented.

Spectator areas will have:

- Pre-determined safer viewing areas, marked with banner tape and signs
- A HAM radio operator
- A Medic
- Marshals for crowd control and capable of instructing spectators
- Controlled parking to ensure access wide enough for an ambulance

The event will publish spectator information that includes:

- Driving directions to and operating times for the Spectator Areas
- Maps identifying the “safer” and “unsafe” areas for viewing
- Detailed list of spectator do’s and don’ts

## 6) Stage Operation

### 6.1) Course Opening

*ADVANCE* - Performs stage control and marshal set-up with the stage captain, ensures blockages are staffed if required, all arrows, markers, and banner tape is properly installed.

*Car 000* - Performs the first stage readiness check, ensuring banner tape is intact, and that marshals are in position and safely parked, approximately 60 minutes before 1<sup>st</sup> competition car. Equipped with a RallySafe transceiver.

*Safety Delegate* - Conducts a final review of danger signage locations, spectator area design, set-up and containment, as well as clear escape zones at blocker locations. In addition, reviews the set-up of start and finish control incursion protection.

*Car 00* - Repeats the stage readiness check approximately 30 minutes after Car 000. Equipped with a RallySafe transceiver.

*Car 0* - Performs the final check of stage readiness and is scheduled to complete its travel through the stage just prior to the start of the first competitor. Equipped with a RallySafe transceiver.

*Car 0b* - If a stage is longer than approximately 15mi, 0b will start several minutes after car 0. 0b will exit the stage near the halfway point, at about the same time car 0 reaches finish. At any point in the last half of the stage, less than approximately 20 minutes will elapse between car 0 and the first competitor. At any point in the first half of the stage, less than approximately 20 minutes will elapse between car 0b and the first competitor. Equipped with a RallySafe transceiver.

Note, for Olympus Rally 2026 there will also be an extra Advance as well as 0b, 00b and 000b. These additional teams will run alternating stages to ensure teams have adequate time to review every stage.

The following two stages will use a slightly different plan:

For Taylor Town, the Safety Delegate will start before 000. This stage does not have a spectator area, so all we need to check on is signage and marshal placement.

For Wildcat, the Safety Delegate will start between 000 and 00 (likely just before 00) and maintain radio contact with 00 for the duration. There will be 0 and 0b on WildCat for additional cars past spectator in a timely manner.

Any Marshals having concerns should wave down a Course Opening car for assistance resolving the situation. These vehicles will have HAM radios to communicate with Stage Captains and Net Control.

Upon completing the stage, Car 0 will notify the Stage Captain and Net Control that the stage is ready to run, Stage Captain will confirm to Net Control that the stage is ready to run. Net Control will consult with the Clerk of the Course if necessary, then declare the stage "Hot", confirm the first start time, and confirm how many cars are to be started with an extra minute gap ahead. Stage Captain will acknowledge the stage is "Hot" to Net Control, and announce the stage is "Hot" on stage frequency.

## **6.2) Competition**

### **6.2.1) Stage Access**

1 hour prior to First Car Out time, stage road will be closed to all non-rally traffic. Marshals will use their vehicles or other barriers to physically prevent access to the stage, except by express permission from the Clerk of Course. Any vehicle driving on stage after 000 has started will be in contact with the Course Opening team and should proceed in stage direction.

No one will be permitted onto the stage road once Car 00 has passed. No one will be permitted onto the stage road once 000 has started without the express permission of both 0 car and Clerk of the Course. If any vehicles or persons intrude onto the stage after Car 0 passes, emergency procedures for Stage Intrusion as outlined in Section 7 will be implemented.

Vehicles that may enter the stage after the roads are closed include:

- Chairperson
- Chief of Controls
- Clerk of the Course/Deputy Clerk of the Course
- ARA Stewards
- Safety Delegate
- Chief of Medical
- Spectator Coordinator
- Cars 000, 00, and 0
- Competitors
- Safety Sweep
- Heavy Sweep
- Green Light

### 6.2.2)

### Car Tracking

Each car displays a unique car number permanent throughout the event, and will be tracked in two ways, manually by ham radio operators and electronically using RallySafe. The car number of each rally car will be logged at Start and Finish, and by Mid-Point Ham(s). Using Stage Frequency, the Start Ham will transmit each car number to the Finish Ham as it starts. Finish Ham will acknowledge each transmission. The Finish Ham will transmit each car number to the Start Ham as it finishes. Start Ham will acknowledge each transmission. Safety Sweep, and Start Ham, will log and monitor car starts and finishes for Missing Competitors.

- If a car does not arrive at Finish in the expected order, or does not pass Mid-Point Ham(s) in the expected order, emergency procedures for Missing Competitor as outlined in Section 7.1 may be implemented.
- Mid-stage Ham's track cars out of order, and if a competitor is missing by 3 cars, they notify Stage Captain and finish begins asking competitors if they saw it and were OK.
- If several minutes pass at Finish with no cars arriving as expected, emergency procedures for Blocked Stage may be implemented.
- If Net Control receives "Hazard on Course" or "High G-Force" via RallySafe, they will notify Chief of EMS.
- If a radio operator receives a report of a "SOS" displayed on stage, Clerk of Course and Chief of EMS will be notified, and CoC/Chief of EMS may declare an emergency for which emergency procedures for Medical Emergency on Stage will be implemented.
- If Net Control receives "SOS" or "SOS Medical" via RallySafe, emergency procedures for Medical Emergency on Stage will be implemented.
- If Net Control receives "SOS Fire" via RallySafe, emergency procedures for Fire will be implemented.

Safety Sweep will follow the final competitor through transits, pausing just long enough with any stopped competitor to ascertain their condition and intentions, communicating both to Net Control.

### 6.3) Sweep

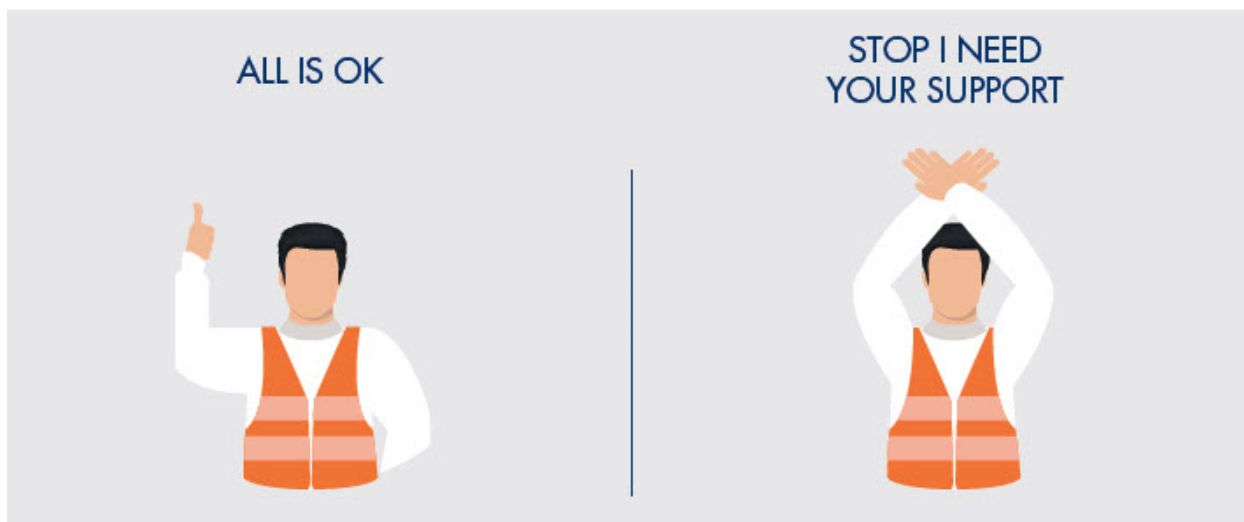
Net Control and Safety Sweep will determine when the final competitor has left Start, Safety Sweep will not be delayed by a late competitor. As soon as practical, but not more than ~1 minutes after, Start Sweep(s) and Safety Sweep will drive the entire stage displaying flashing amber lights. If the stage is to be opened to normal traffic, the final Sweep vehicle will display a flashing green light.

When Sweep encounters a stopped competitor on stage, a brief assessment will be performed, and the condition of the crew and car relayed to Stage Captain and Net Control. Safety Sweep will continue, to maintain a minimal gap to the final competitor. If Safety Sweep passes a competitor the team will be retired and their timecard forfeit.

## 7) **Emergency Procedures (SOS)**

Each car acts as a safety net for the competitor just ahead, Safety Sweep acts as a safety net for the final car. An emergency will be declared by displaying an "SOS" sign. If the radio operator or any other marshal observes an SOS situation, they must determine if it really is an SOS. If the crew exits the car and is actively responding to the situation, then the radio first reports what they are observing. The operator or marshal should ask if the crew is OK. If there is a doubt whether the crew is OK, if the car is on fire, if the road is 100% unpassable with absolute certainty, or if there are civilians (cars or people) on stage, then the FIRST ACTION must be to STOP the next car so that the crews begin the SOS protocol. THEN call it in on the radio. KNOW and take action before keying the mic. If this is a marshal position, then send the 2<sup>nd</sup> car to arrive to the next radio position to report the incident.

The radio operator or marshal should use the following gestures to notify upcoming cars whether they should stop:



While implementing any emergency procedure:

- Cars should continue to start on schedule until until the stage start is directed to stop starting cars by the Clerk of Course via Net Control.
- If a delay between cars leaving start exceeds 20 minutes, the Stage Captain will coordinate with Net to cancel the stage.
- The Sweep Team or any others responding to an emergency will travel in course direction.

### **7.1) Missing Competitor**

If a car does not arrive at Finish in the expected order, Net Control will immediately be notified. Stop Control will ask each competitor for the location and condition of the missing car. It must be confirmed that the missing competitor has displayed the "OK" sign. After 3 cars pass stop control with no confirmation that the missing competitors are "OK", Chief of Emergency Services will be notified and emergency procedure for Medical Emergency on Stage may be implemented.

### **7.2) Medical Emergency on Stage**

If a person is seriously injured on stage, or if a competitor fails to display the "OK" sign after a crash, or if a competitor displays a "SOS" sign, Net Control and Chief of Emergency Services will be immediately notified. Chief of EMS or Net Control may direct the Sweep team to proceed immediately from the start of the stage and the remaining cars at stage start will be held.

Upon arrival the Sweep team will:

- Assess the situation and determine if additional ambulance response is necessary.
- Provide an update/request for assistance to Net Control by radio.
- Provide basic first aid until the ambulance arrives.
- Assist/advise emergency responders regarding the rally car cage, racing seats, and head/neck restraints.
- Assist emergency responders with car stabilization and competitor extrication.

Chief of Emergency Services will provide supervision/guidance. Net Control will contact additional resources as requested, including contacting the appropriate County Dispatch Center to request EMS from the local Fire Department. Location, car number, number of injured persons, type of injuries, and updated condition may be communicated by radio. Names, and unnecessary details will not be communicated by radio.

Transportation to a hospital will be coordinated through the local fire department, whether by Medic One, private ambulance, or helicopter. Sweep trucks may be used for emergency transport as a last resort.

### **7.3) Blocked Stage**

If a radio point notes that no competitors have passed for an unusual period of time, Net Control will be notified. An unexplained delay of 3 to 5 minutes (based on a 1 minute start interval) indicates a problem on stage. Net Control may dispatch a single Sweep team to clear the stage and confirm by radio that it is safe to continue.

### **7.4) Stage Intrusion**

If a marshal or radio operator manning a position on a "Hot" stage observes a vehicle or person (other than an accredited Media person on foot) on the stage road, the Start Ham, Stage Captain, Chief of Emergency Services, and Net Control will be immediately notified.

A car/truck on the stage road is especially serious and every effort will be made to warn on-coming competitors: midpoint radio positions will display an "SOS".

The Start Crew will hold the competitors at Start until it is confirmed that the

person/vehicle is secured in a safe location off the stage road. If there is any question whether the stage road is clear, or if it cannot be confirmed clear within 20 min, the Stage Captain will coordinate with Net Control to re-pace the stage road or cancel the stage.

**7.5)**

### **Fire**

If a car fire occurs, or if a brush fire is spotted, Net Control and Chief of Emergency Services will be notified. Net Control and Chief of Emergency Services will immediately coordinate assistance from the local Fire Department via 911, and the Landowner via the Fire Hotline. The Net Control will direct the Sweep team to proceed immediately from the start of the stage. Competitors and Marshals will remain at the fire as long as it is safe, using fire extinguishers and shovels to contain the fire until professional fire fighters arrive.

**Deckerville 2026 Spectator**  
GPS 47.16832, -123.47871



Stage Route

~60'

Yellow banner tape 5-10 Feet from Rd upper section. This part of the Rd elevated.

No go area 50ft from Rd

Yellow banner tape 5 Feet from Rd upper section. This part of the Rd elevated 5-10 ft.

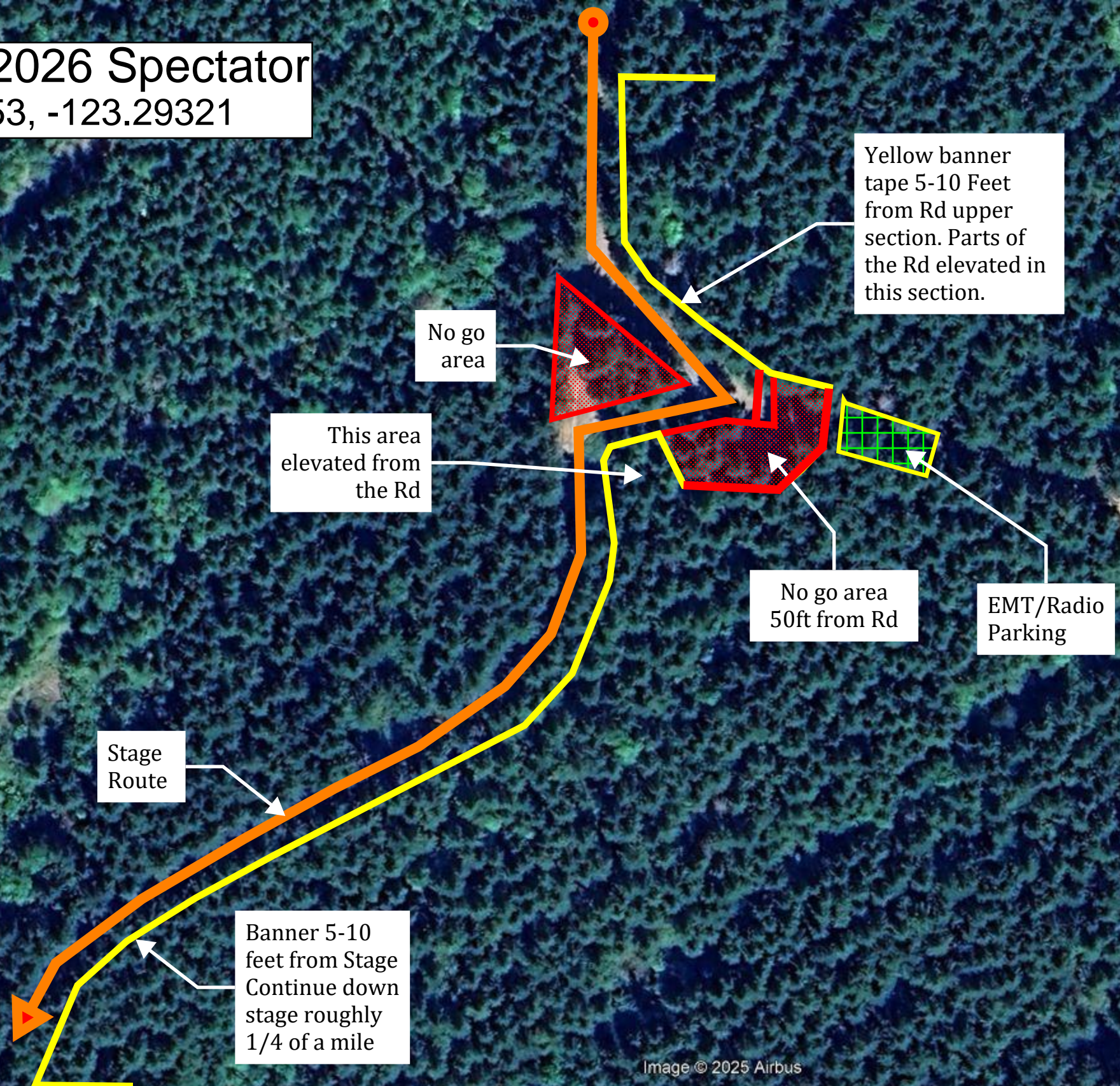
EMT/Radio Parking

~400'

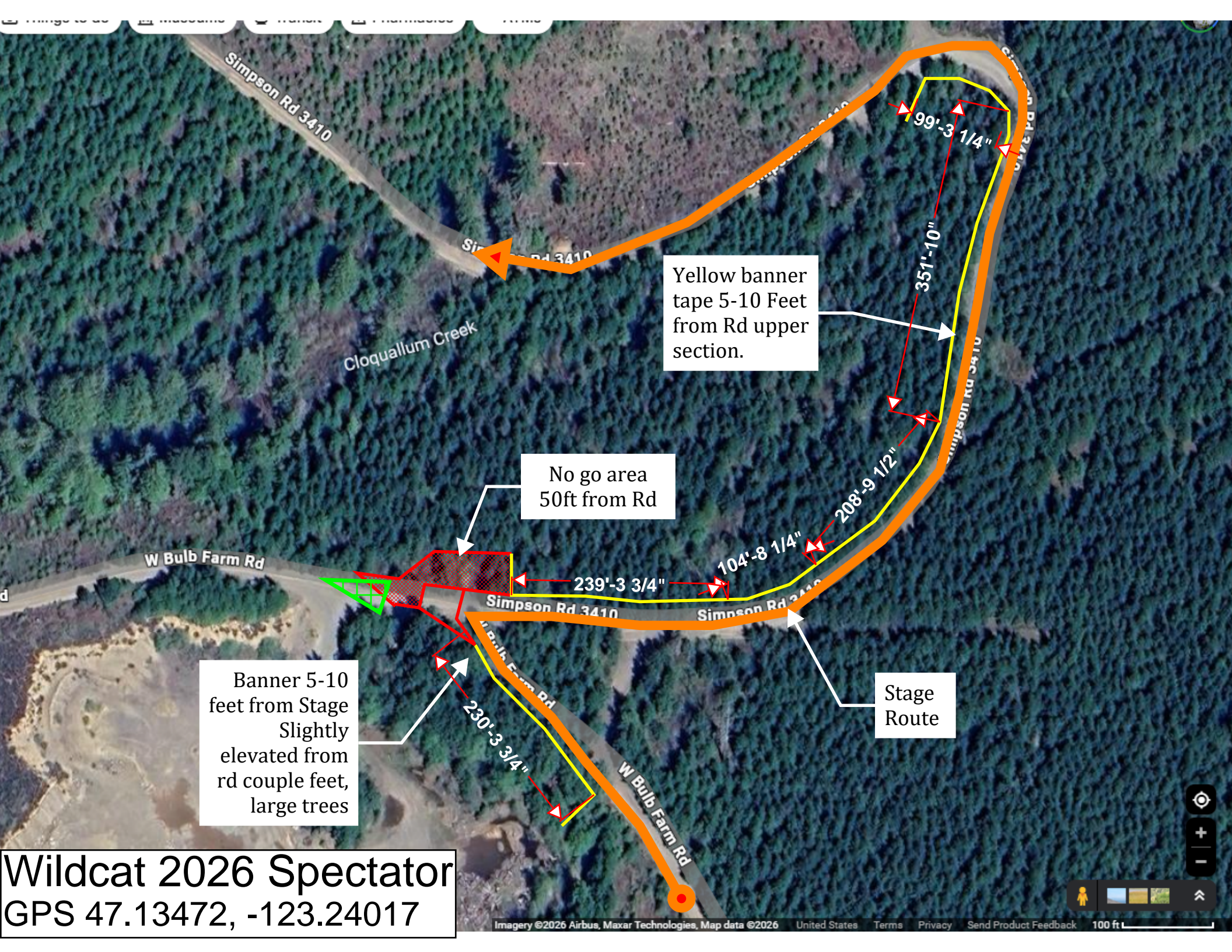
355 ft

# Stillwater 2026 Spectator

GPS 47.19753, -123.29321



325 ft



Banner 5-10 feet from Stage Slightly elevated from rd couple feet, large trees

No go area 50ft from Rd

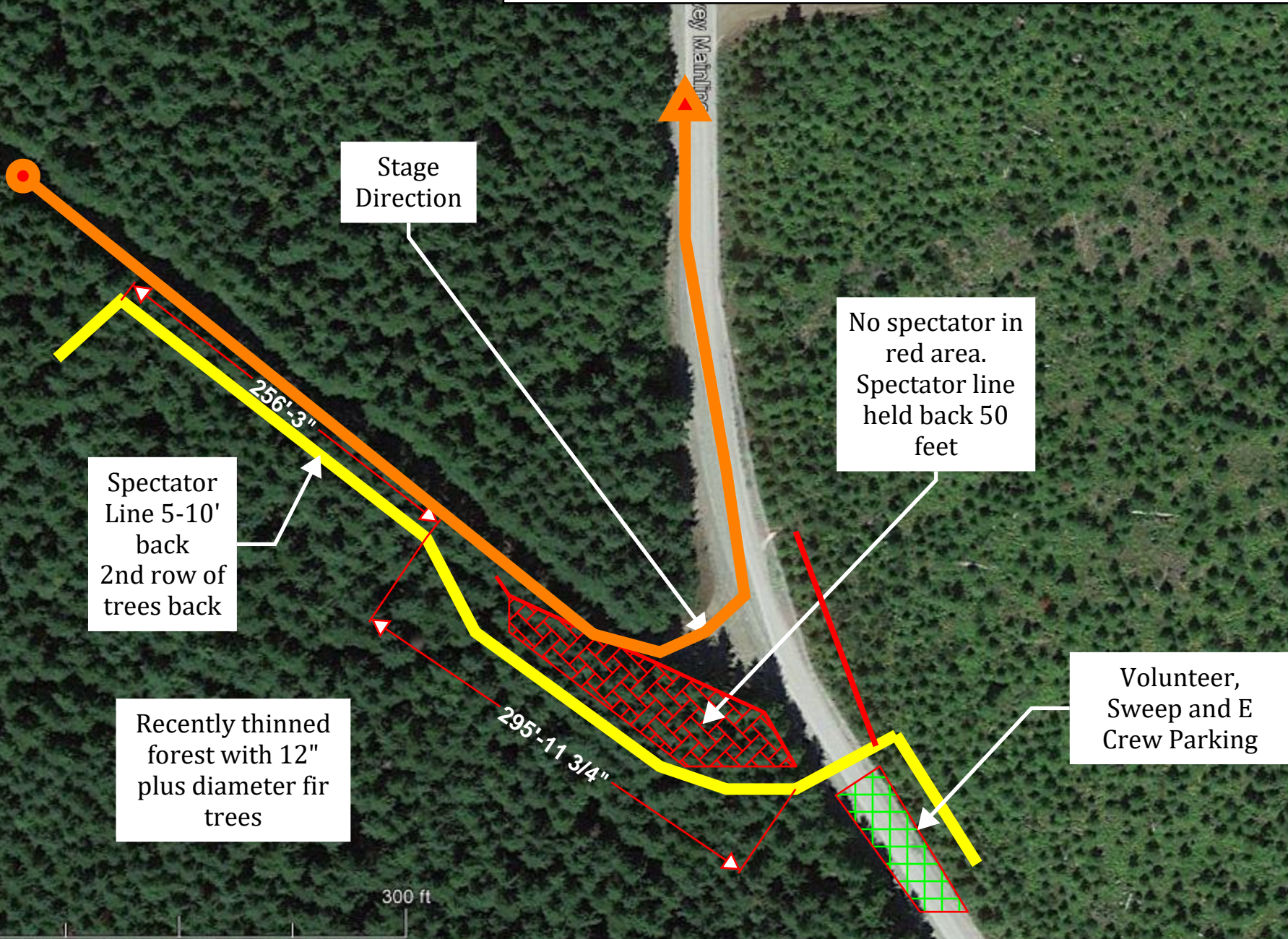
Yellow banner tape 5-10 Feet from Rd upper section.

Stage Route

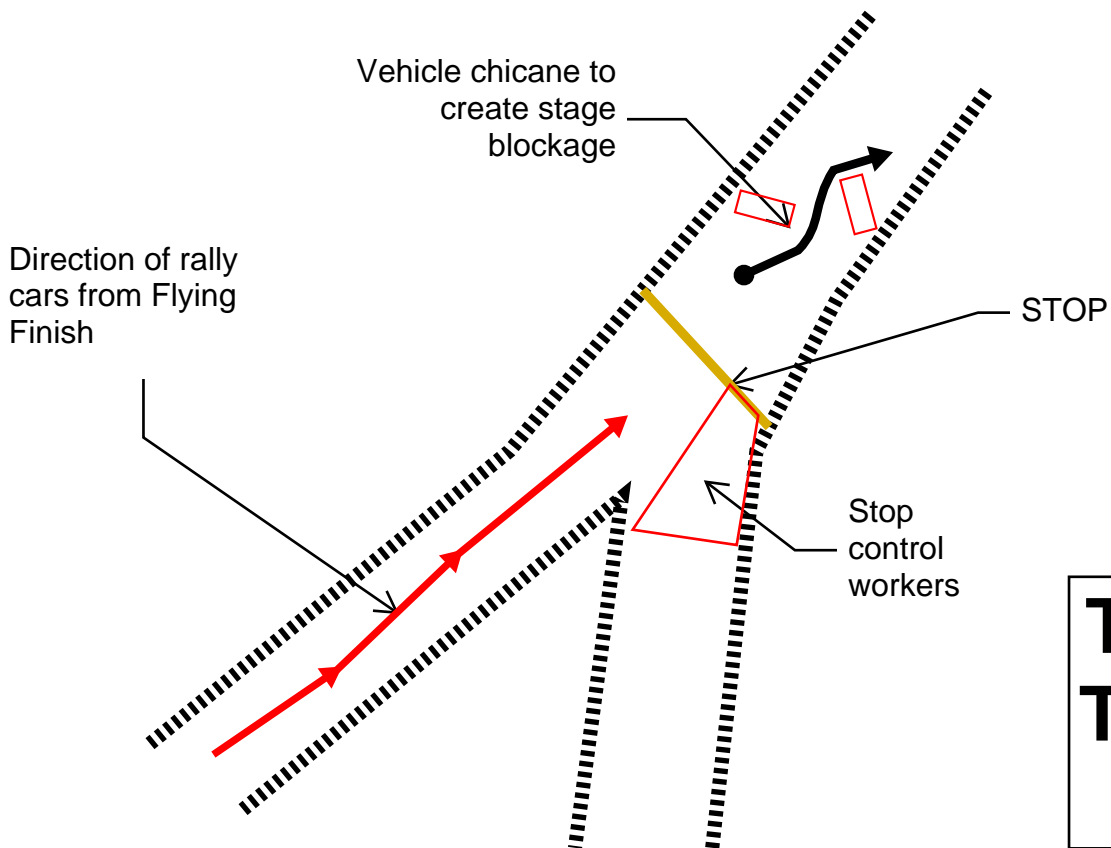
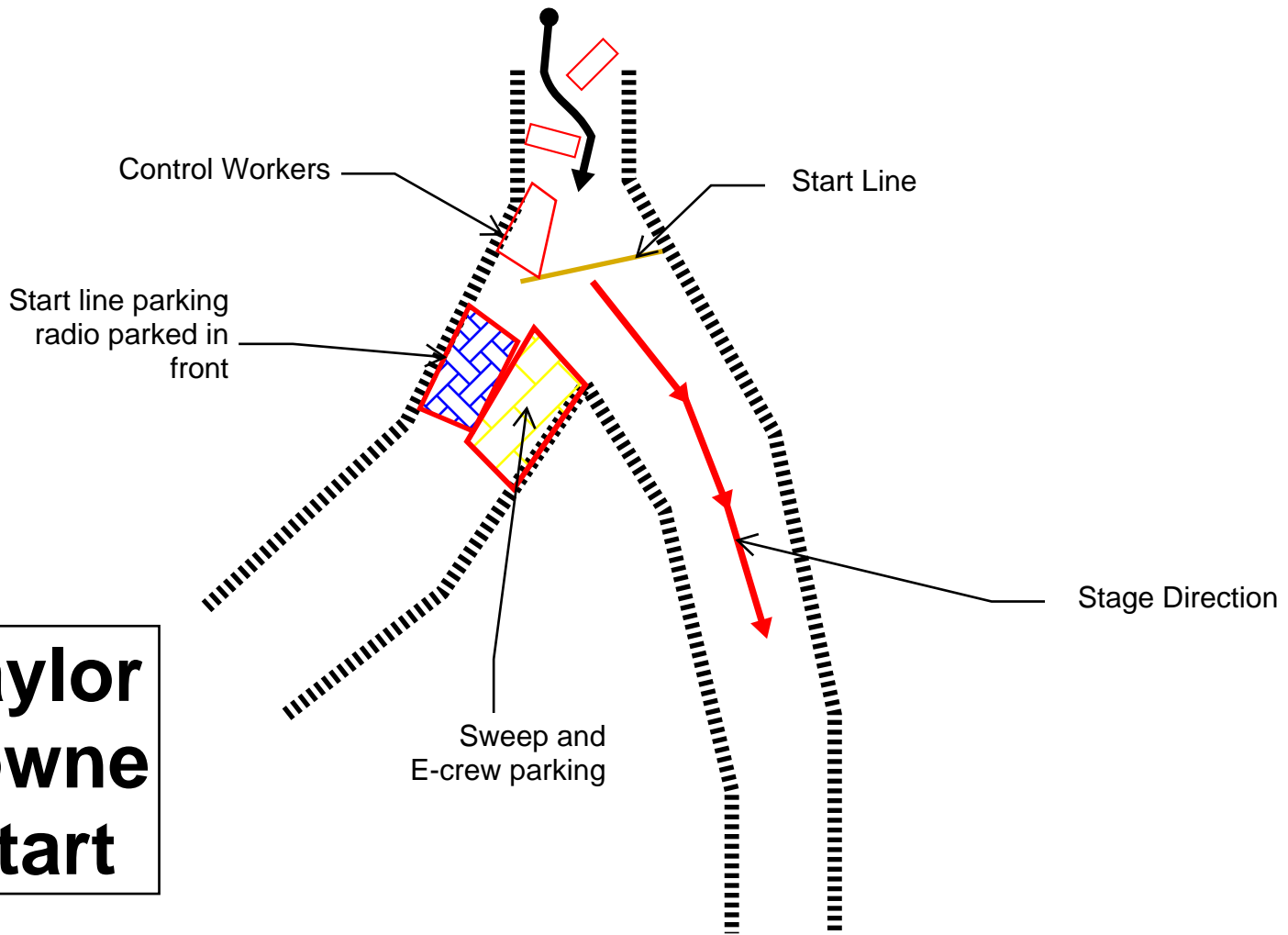
Wildcat 2026 Spectator  
GPS 47.13472, -123.24017

# Nahwatzel Meadow Spectator A

GPS 47.25125, -123.30875

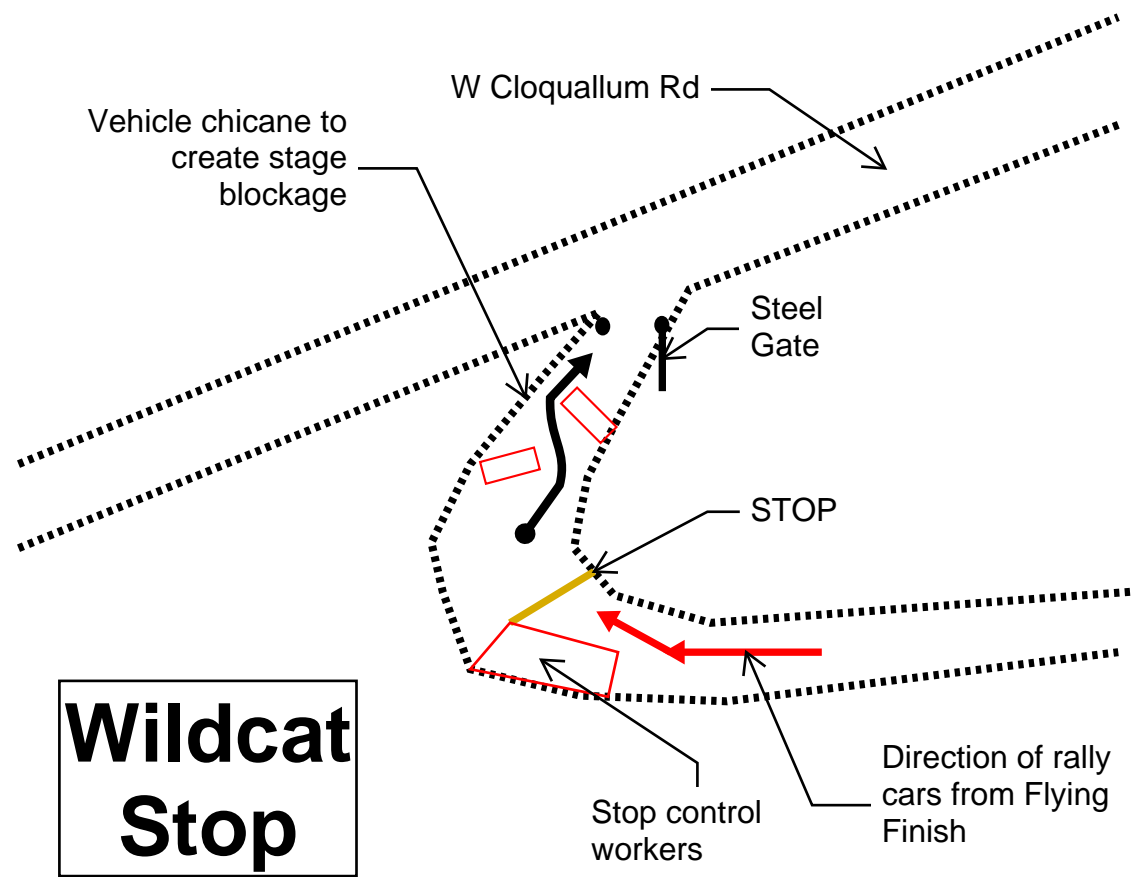
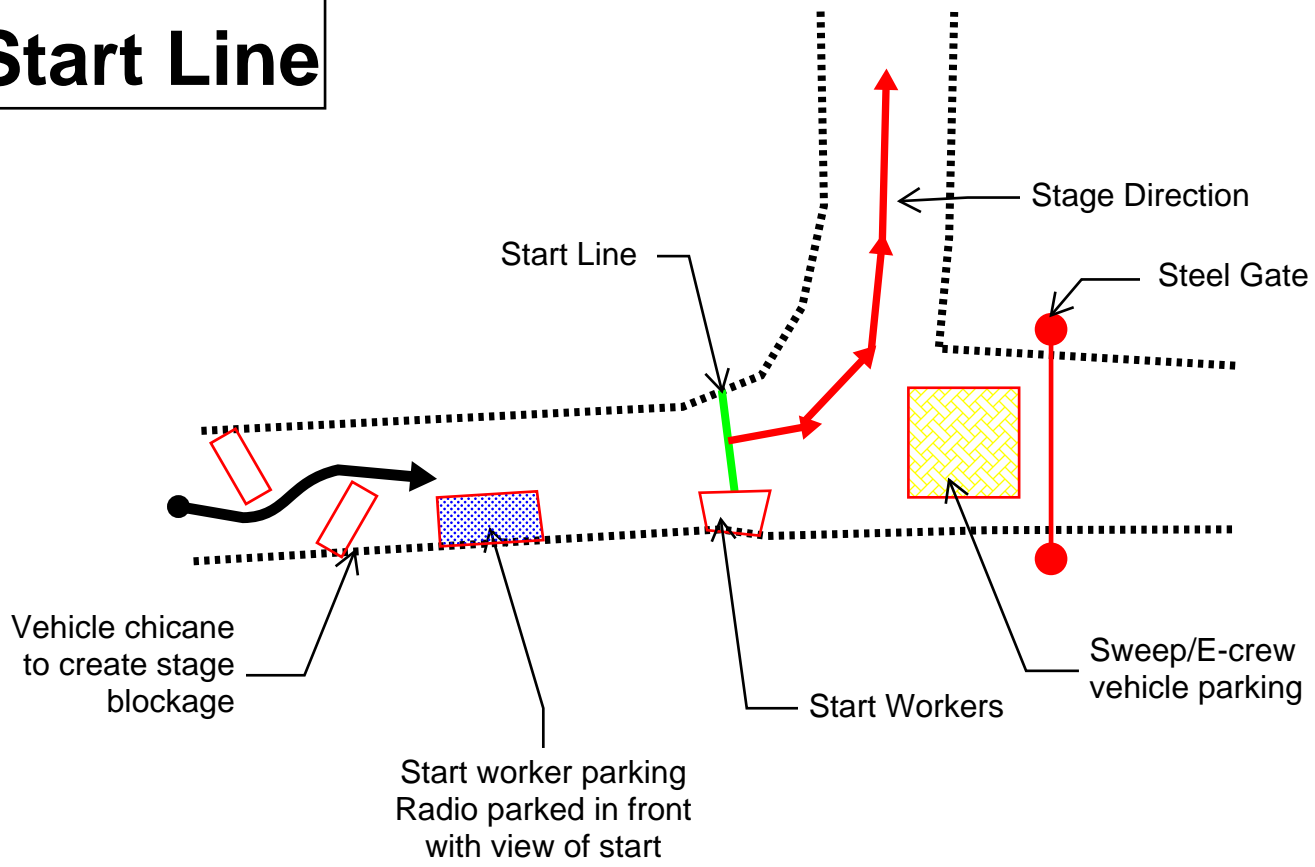


# Taylor Towne Start



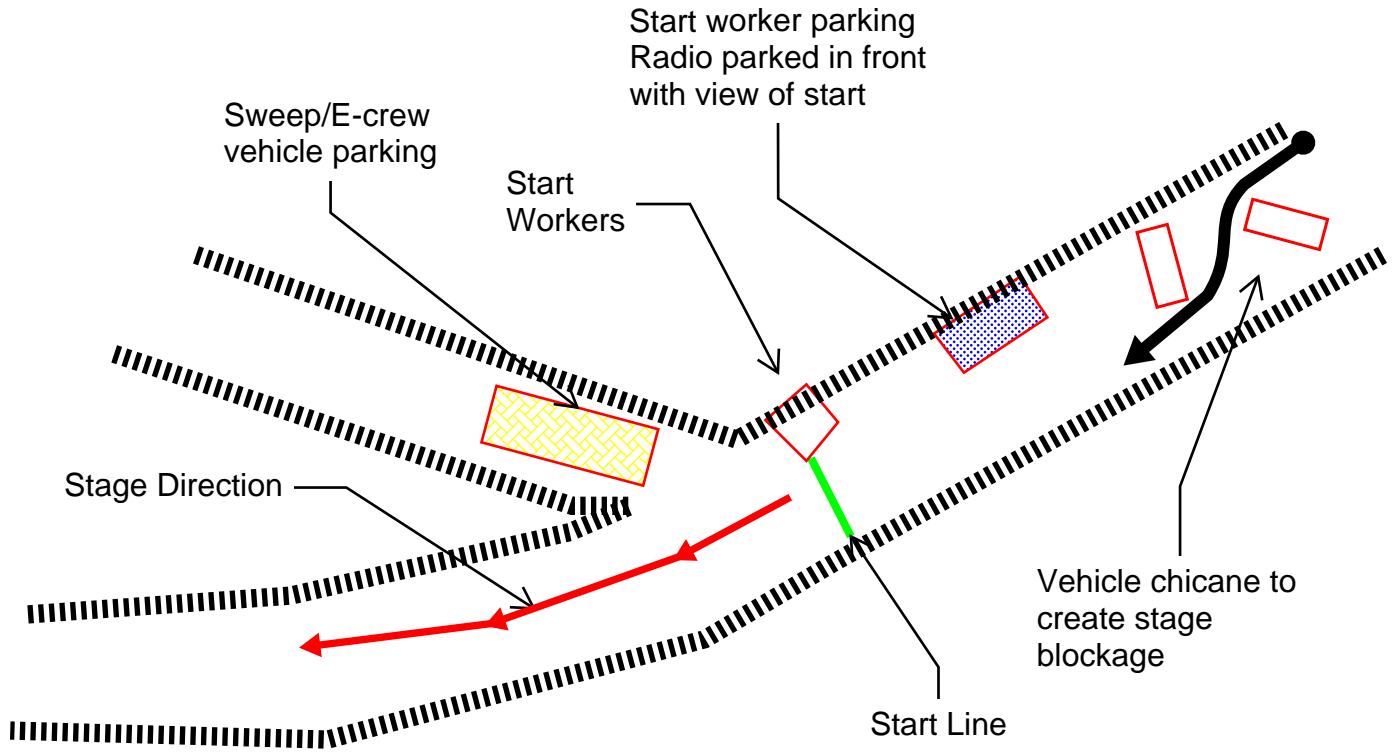
# Taylor Towne Stop

# Wildcat Start Line

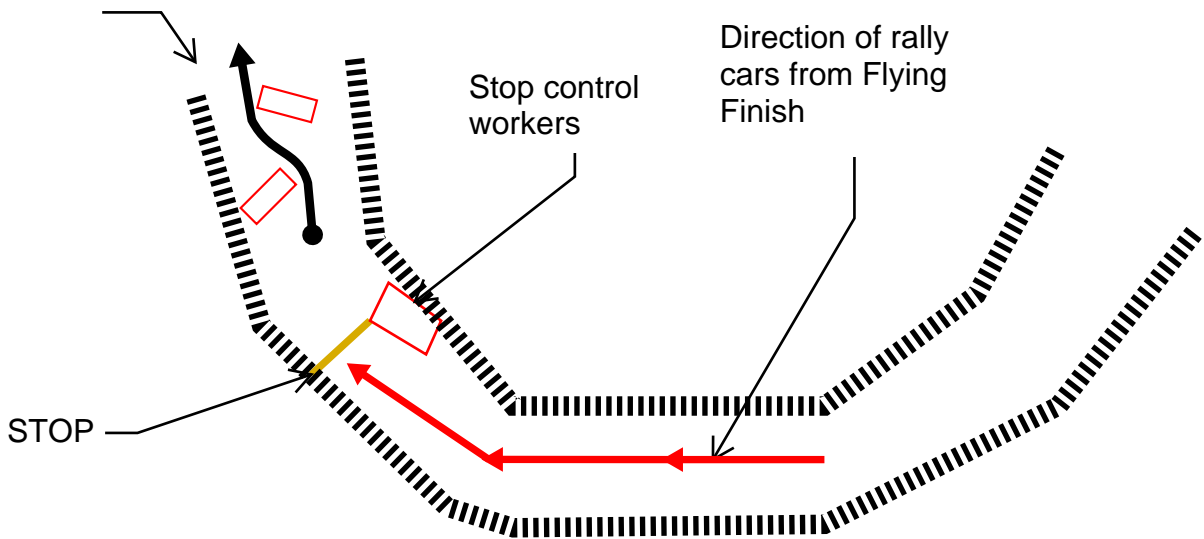


# Wildcat Stop

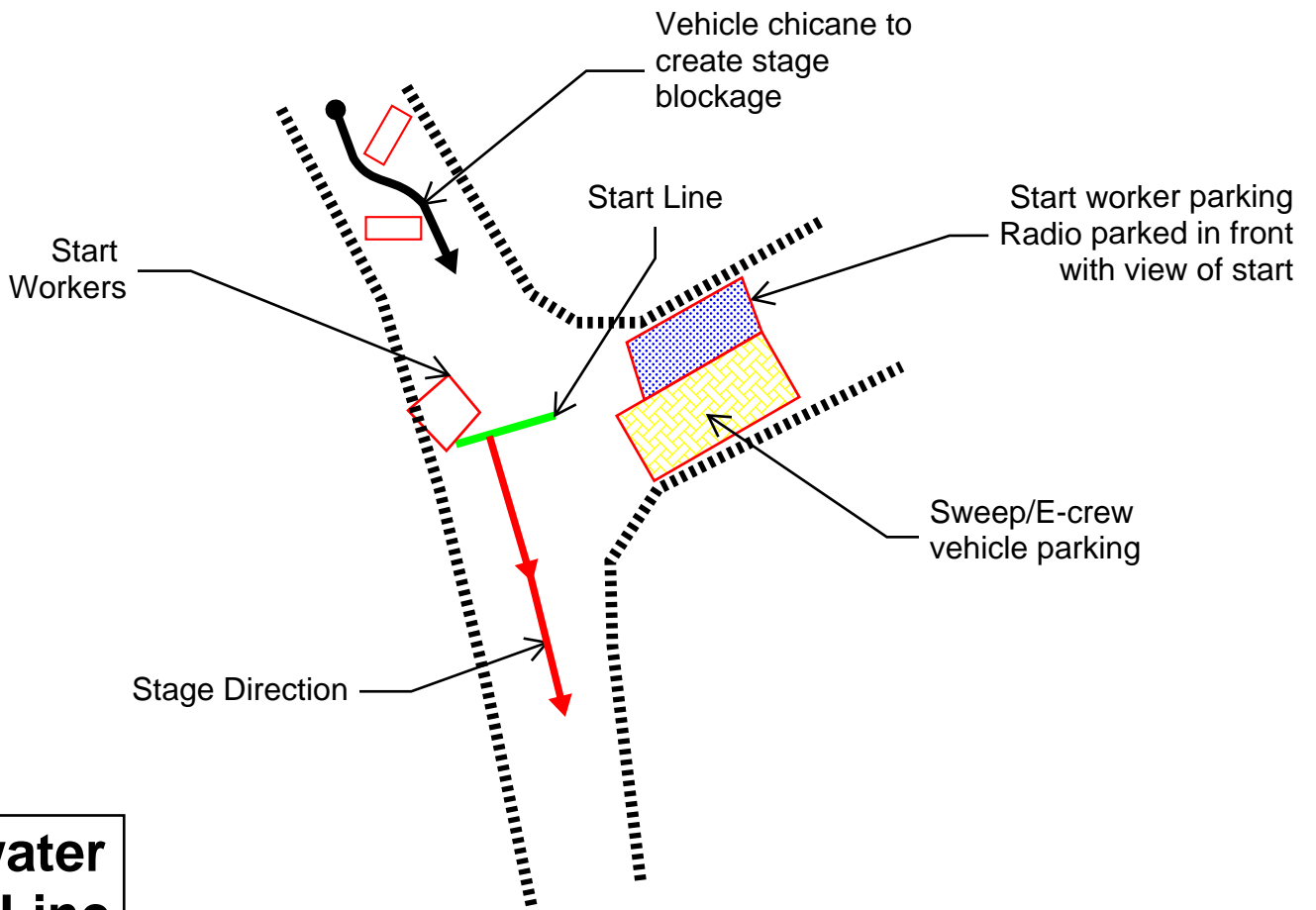
# Dayton Start Line



Vehicle chicane to create stage blockage

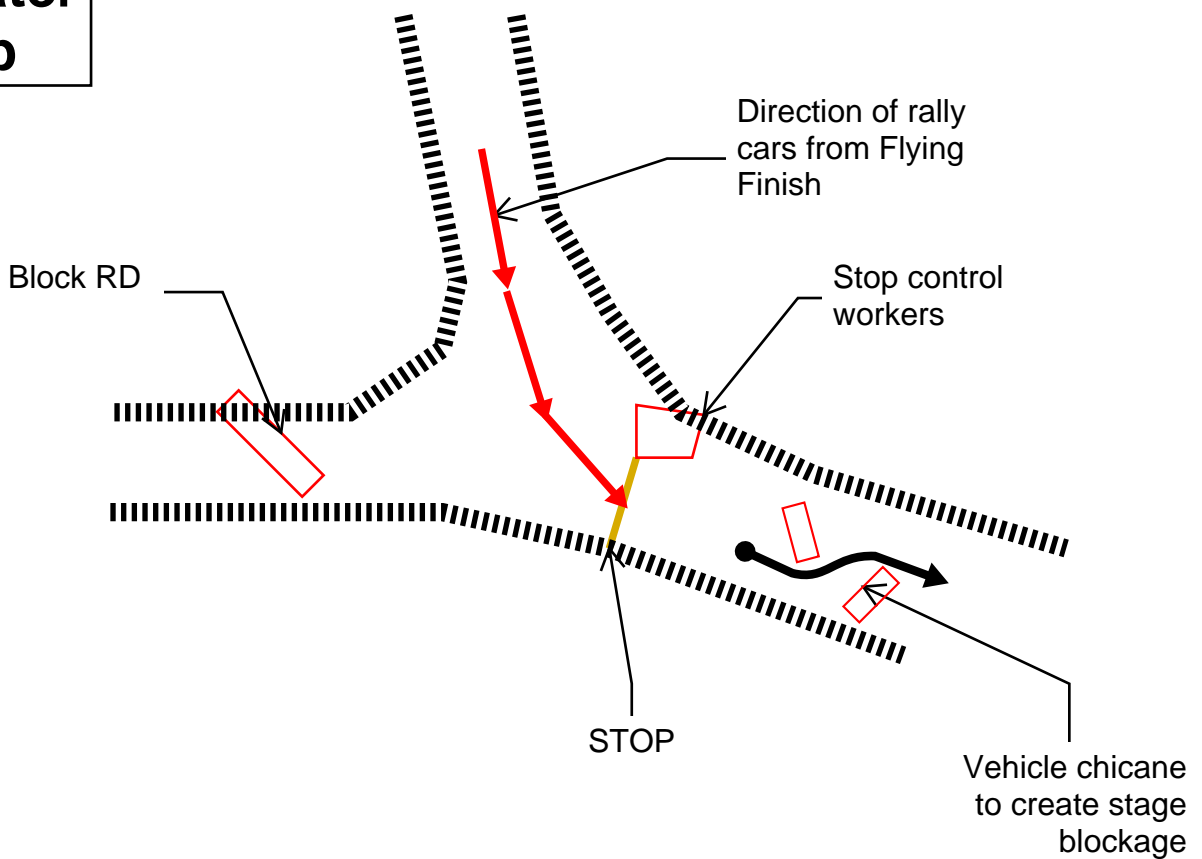


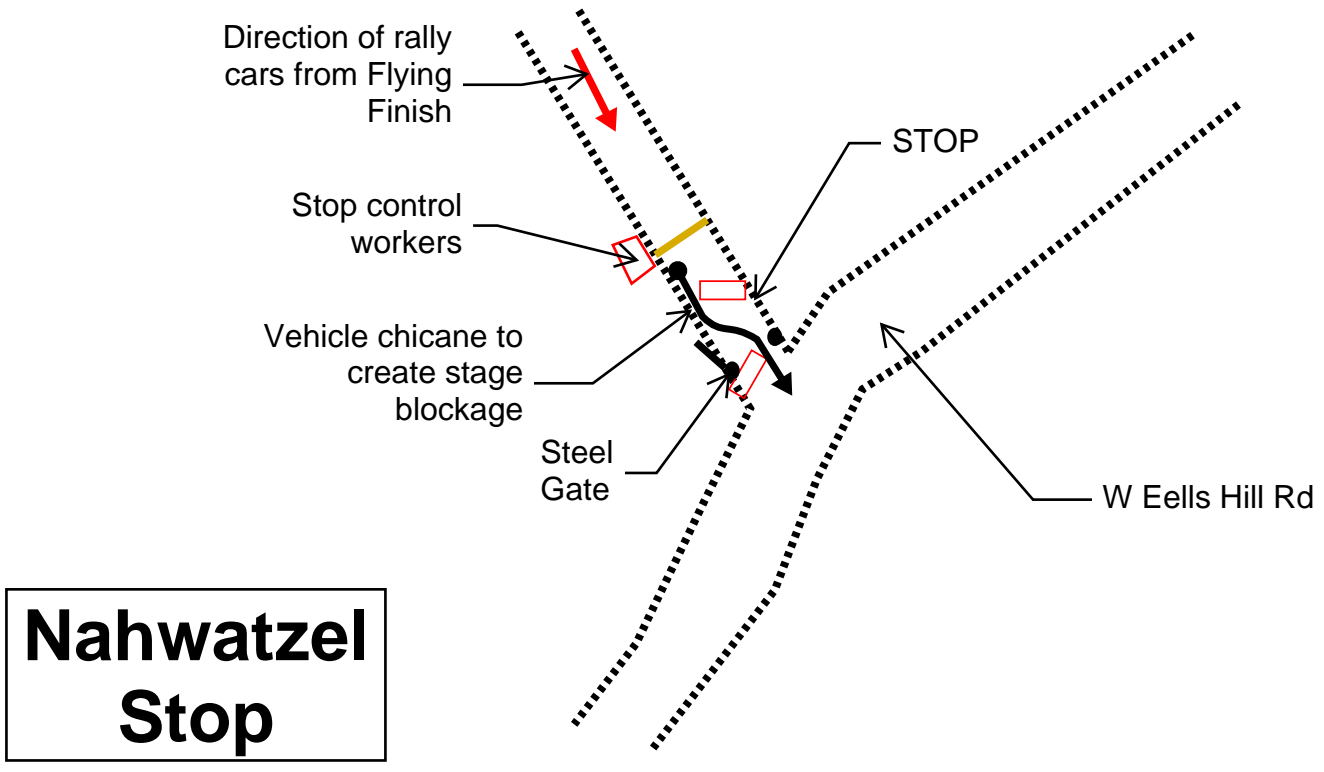
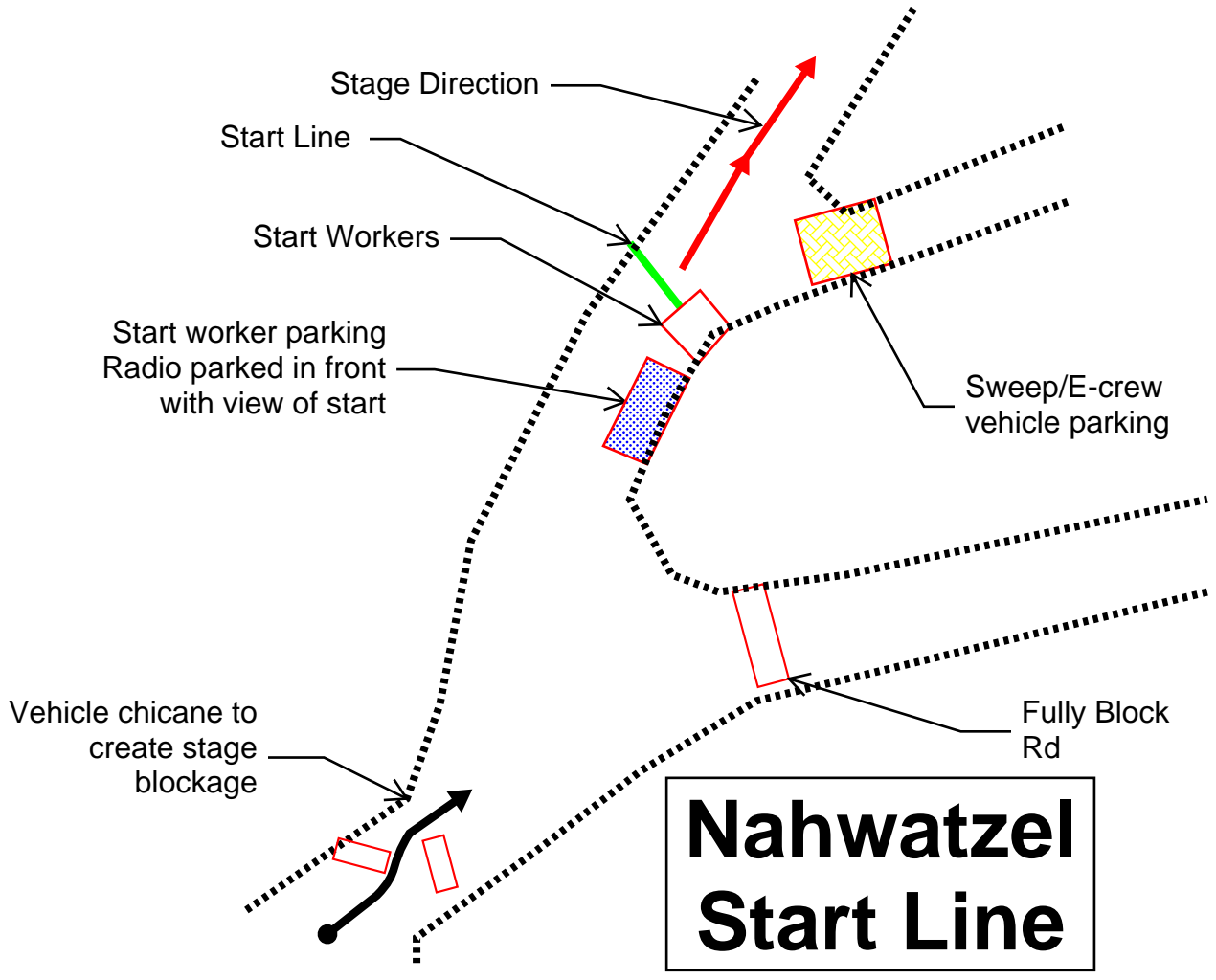
# Dayton Stop



**Stillwater Start Line**

**Stillwater Stop**

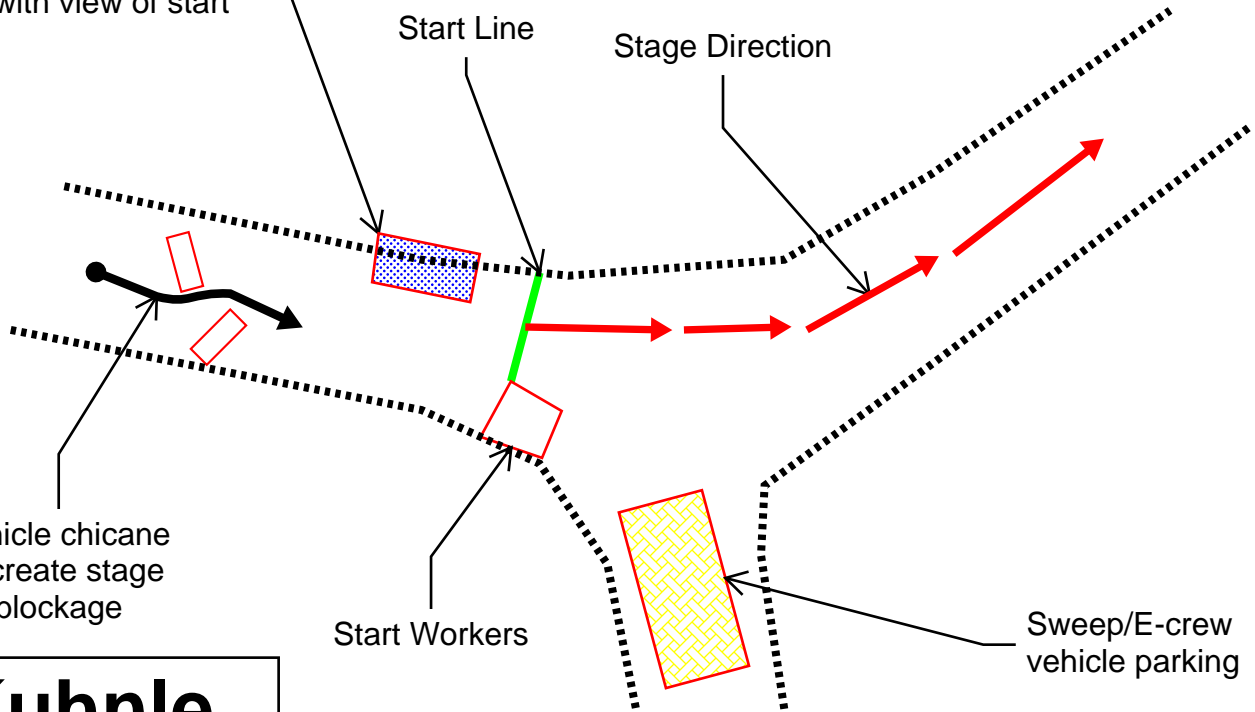




Start worker parking  
Radio parked in front  
with view of start

Start Line

Stage Direction



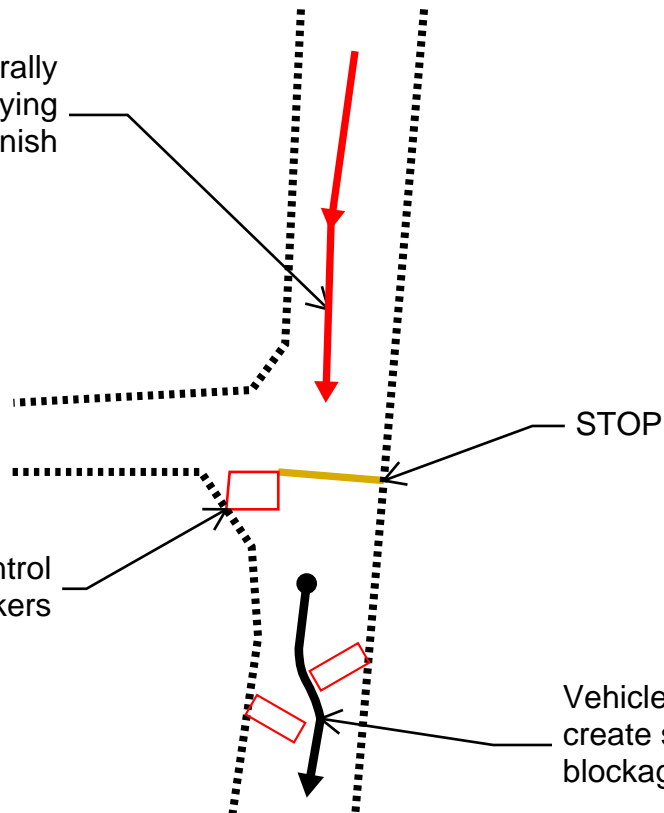
Vehicle chicane  
to create stage  
blockage

Start Workers

Sweep/E-crew  
vehicle parking

# Kuhnle Start Line

Direction of rally  
cars from Flying  
Finish



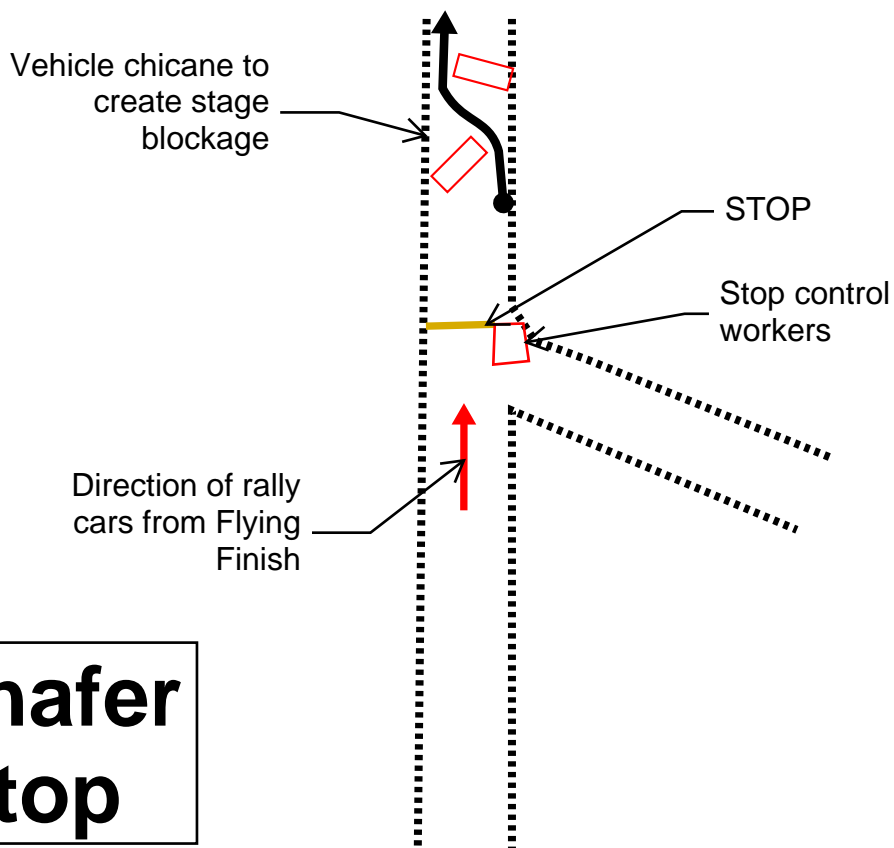
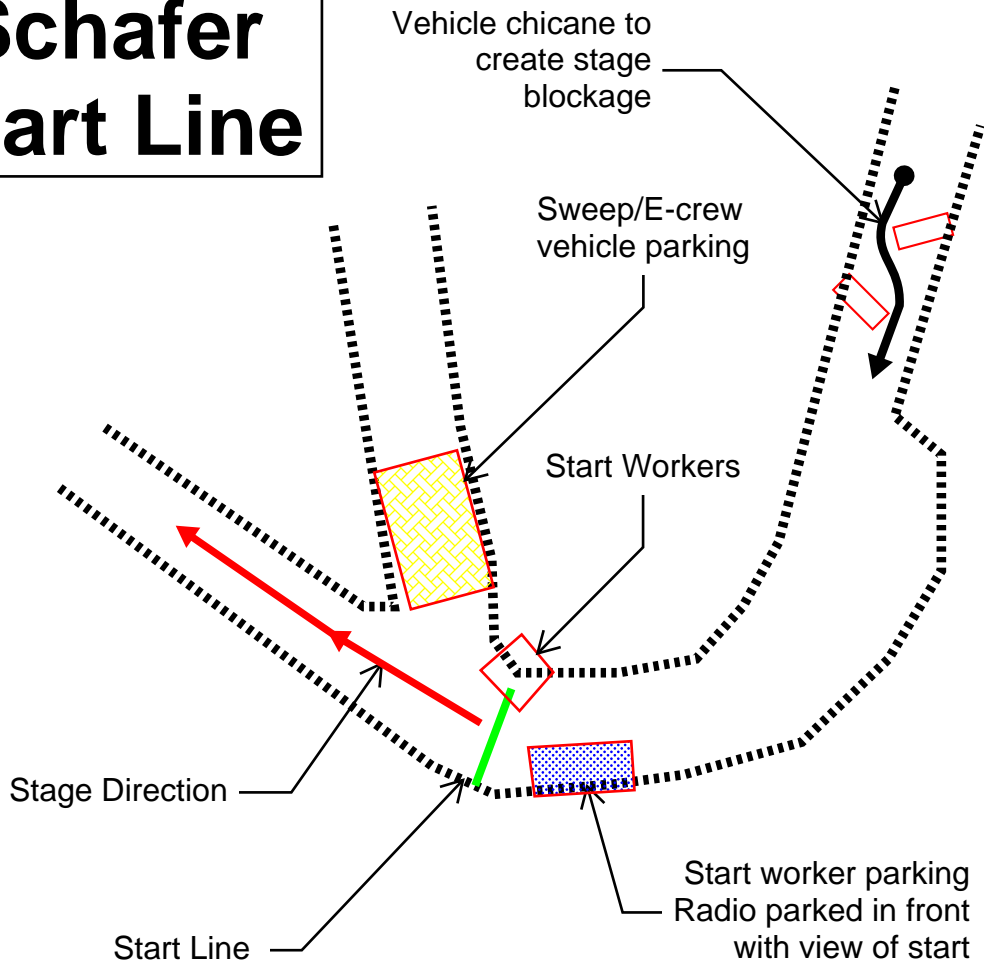
STOP

Stop control  
workers

Vehicle chicane to  
create stage  
blockage

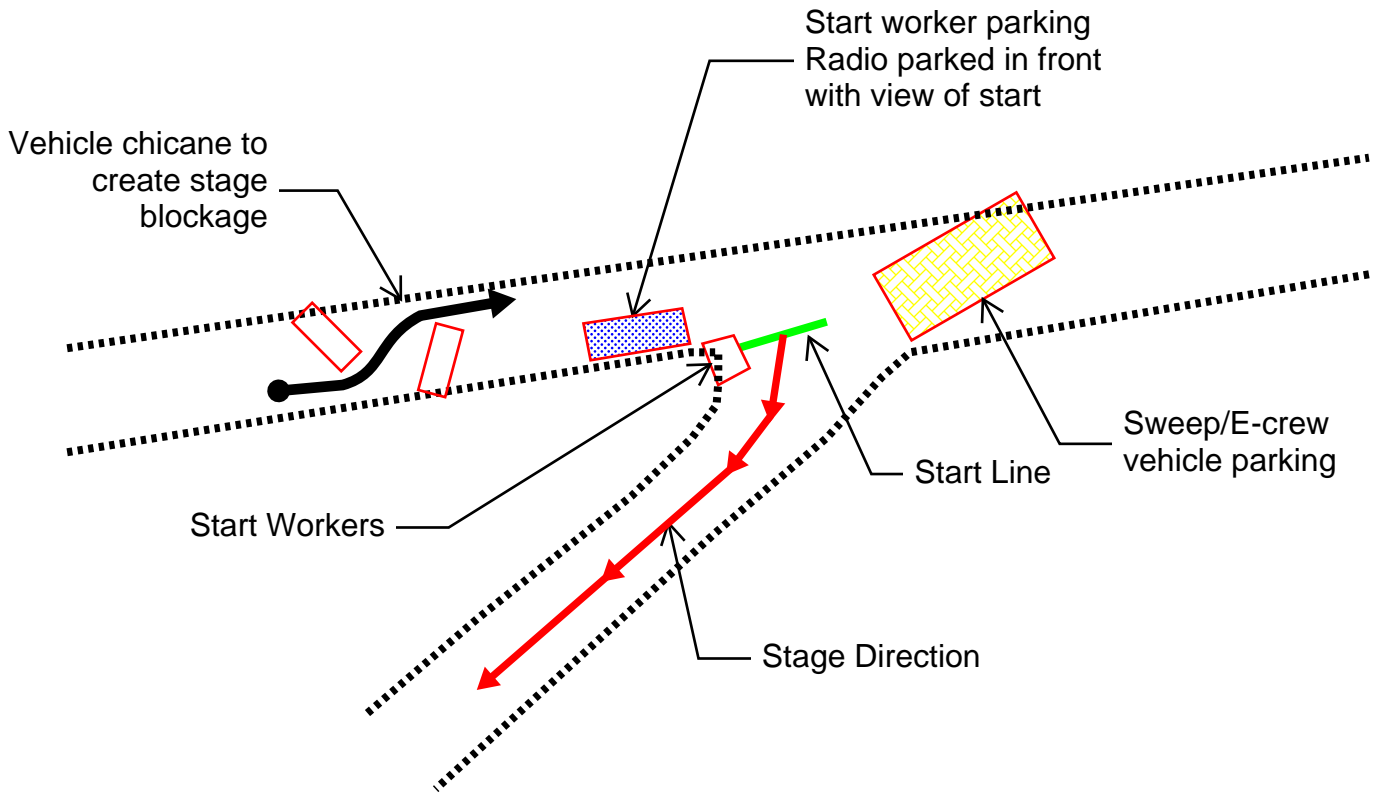
# Kuhnle Stop

# Schafer Start Line



# Schafer Stop

# Deckerville 43 Start Line



# Deckerville 43 Stop

